



25

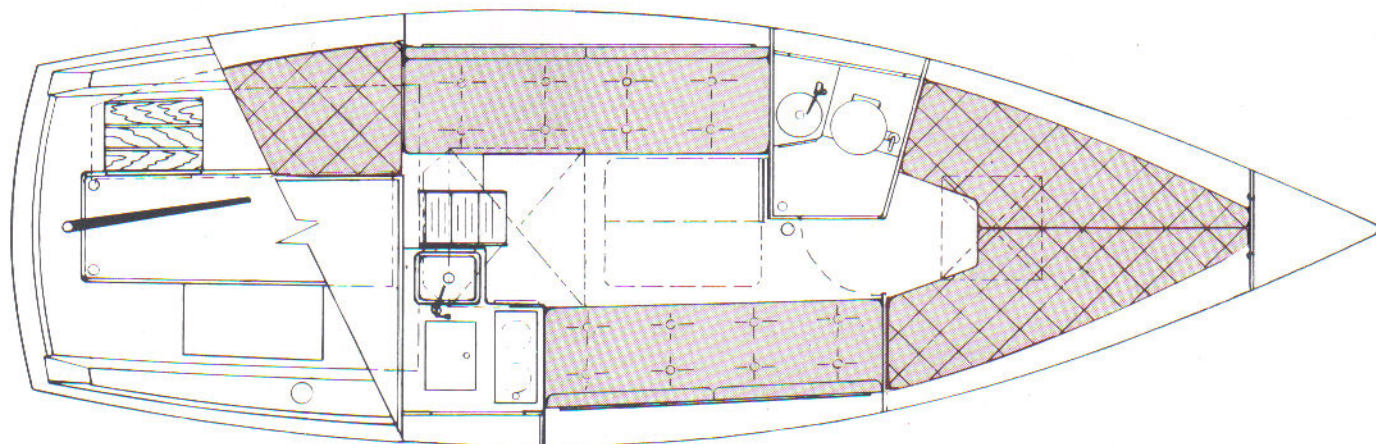
**QUALITY, VALUE AND PERFORMANCE
AT A PRICE YOU CAN AFFORD**





SPECIFICATIONS

LOA	24'11"
DWL	21'0"
Beam	8'0"
Draft	2'6"
Displacement	4,500 lbs.
Ballast	1,600 lbs.
Sail Area	265 sq. ft.
Mast Height Above DWL	32'9"
Head Room	5'11"
Engine: Outboard	7.5 to 15 hp
Optional Diesel	8 hp



The Watkins 25 is very spacious below and compares to many 27-foot boats. Head room is an exceptional 5'11" and the enclosed head with optional shower is unusual for a 25-foot boat. Sleeping accommodations for five are standard and in addition the starboard lounge berth is available as a pull-out double berth.



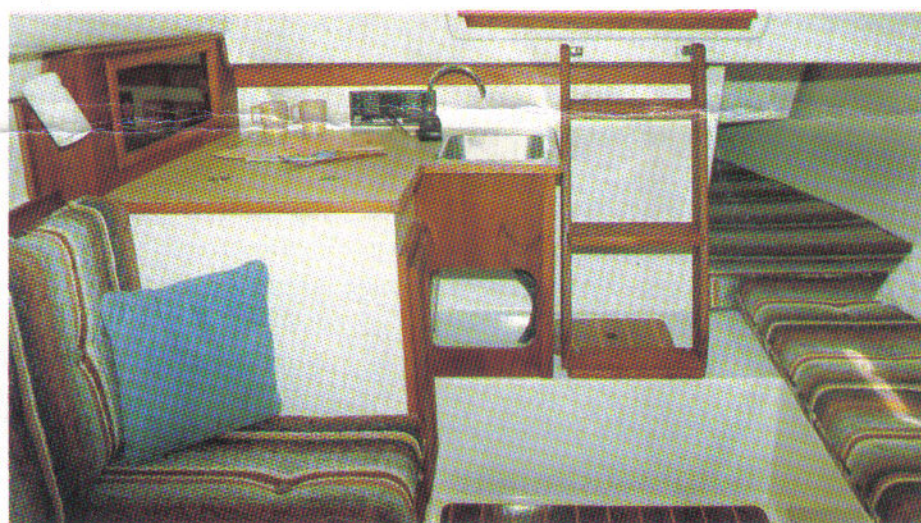
The Watkins 25 is built to last. The hull is heavily built of solid hand laid-up fiberglass to provide years of service. Watkins has avoided foam and balsa cores due to the potential for delamination and water absorption. The rigging is oversized to provide an extra degree of reliability.

The unique external thru-bolted combination toe rail and hull-to-deck joint introduced on the Watkins 36 and 32 has also been utilized on the 25. This extremely water-tight and durable connection has been copied by other manufacturers since its introduction. Four opening ports with screens combined with a large fiberglass sliding companionway hatch and plexiglass forward hatch provide excellent ventilation and light to the interior.

The deep self-bailing cockpit with high, comfortable backrests provides safe and enjoyable cruising in any weather.

Many high quality big-boat options are available. An 8 hp in-board diesel engine is available as is pedestal steering with compass, pedestal guard, wheel brake and controls. A marine head with holding tank, teak anchor platform, pressure water system with shower are other examples.

WATKINS 25



The Watkins 25 was designed to meet the need for a roomy trailerable boat. The maximum beam is 8 feet yet the interior space below is exceptional. The 25 has excellent sailing qualities with fairly deep "V" sections forward and a flat run aft. The fixed keel with internal ballast eliminates the many problems associated with swing keels or center boards.

The 25 can be ordered to suit the needs of an individual. The basic boat comes ready to sail for weekend cruising at a very competitive price and the many, many options allow a boat to be customized for extended live-aboard cruising.

The Watkins 25 is designed and built to provide many years of safe and comfortable sailing for the discriminating owner.



WATKINS YACHTS, INC.

12645 49th Street North
Clearwater, Florida 33520

Telephone (813) 577-3684